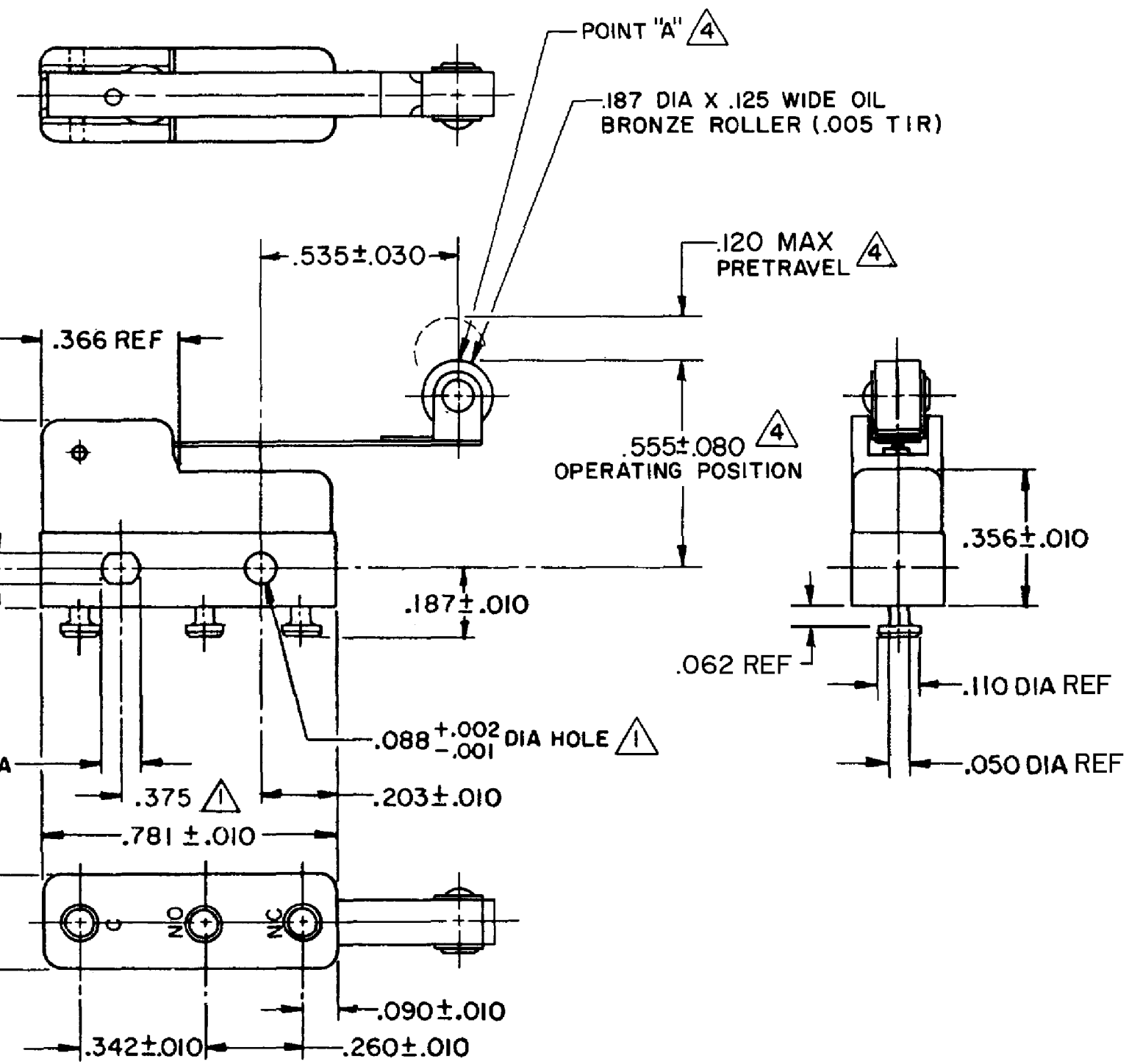


HONEYWELL  
PART NUMBER  
311SM7-T  
PRODUCT CODE  
TZA1400

REV	DOCUMENT	CHANGED BY	CHECK
5	0038114	KVS 03JUN08	ASD



NOTE -

- 1 MOUNTING HOLES WILL ACCEPT PINS OR SCREWS OF .087 MAX DIA ON .375 ± .002 CENTERS
- 2 SWITCH WILL WITHSTAND TEMPERATURE OF 250°F
- 3 TERMINALS ARE PLATED FOR SOLDERING
- 4 CHARACTERISTICS TAKEN AT POINT "A"

RELEASE NO.	SR - 11750
REPLACES	-

CHARACTERISTICS 4
OPERATING FORCE - - 30 GRAM MAX
RELEASE FORCE - - - - 5 GRAM MIN
DIFFERENTIAL TRAVEL - - - .027 MAX
OVERTRAVEL - - - - - .026 MIN

ELECTRICAL DATA		
CONTACT ARRANGEMENT SPDT		
30 VOLTS DC RATING		
	SEA LEVEL	50,000 FT
INDUCTIVE	3 AMP	2.5 AMP
RESISTIVE	5 AMP	5 AMP
MAXIMUM INRUSH 24 AMP		
APPROVALS	KEMA, CE	5A, 250V ~ T85 1E4
	UL, CSA	5A, 250 VAC ~

DESIGN UNITS: INCH
TOLERANCES UNLESS NOTED:
NO PLACE X ±
ONE PLACE .X ±
TWO PLACE .XX ±
THREE PLACE .XXX ±
FOUR PLACE .XXXX ±
ANGLES ±
THIRD ANGLE PROJECTION

DRAWN	VK	02 NOV 07
CHECK	RJ	02 NOV 07
THIS DRAWING COVERS A PROPRIETARY ITEM AND IS THE PROPERTY OF HONEYWELL. THIS DRAWING IS NOT TO BE COPIED OR USED WITHOUT THE PERMISSION OF HONEYWELL.		
INTERPRET PER ANSI Y14.5M-1982 OTHER HONEYWELL ENGINEERING STANDARDS MAY APPLY		
RASTER		

<b>Honeywell</b>			
TITLE <b>SWITCH - BASIC</b>			
SIZE	TYPE	DRAWING NAME	REV
<b>B</b>	<b>I</b>	<b>311SM7-T</b>	<b>5</b>
SCALE	-	WEIGHT .006 LB MAX	SHEET 1 OF 1